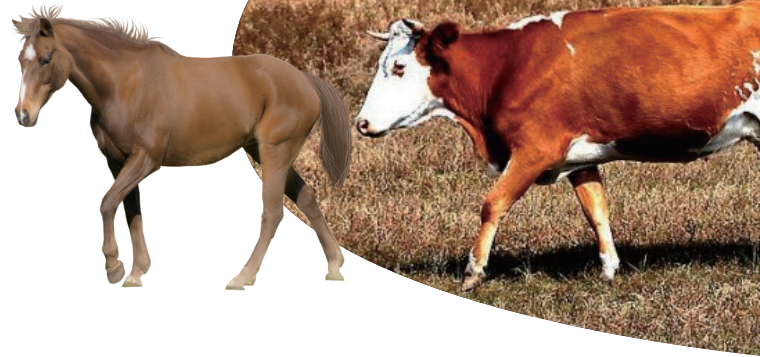


MX5 Vet

EMPOWERING all your clinical needs

Small Animal

10" IPS screen with touch screen
5MHz R=20mm convex probe (3~7MHz)
128 element probe
Depth from 2 to 10cm
Frame rate: 11~13 fps
Imaging mode: B/C/PWD/M
Weight ~1.5kg
Dimension: 260*172*36mm
Continuous scanning time: > 4 hours
OS platform: Android/ Windows
15 months warranty



Bovine/Equine

SPECS

RL8-4T: 6MHz 64mm 96-element linear rectal probe (4~8MHz)

RL8-4TE: 6MHz 64mm 128-element linear rectal probe (4~8MHz)

RC5-2ST: 3.5MHz R=60mm 80-element curvilinear rectal probe (2~5MHz)

Imaging mode: B/PWD

Weight ~350g

Power consumption < 1.5W

Belt clamp

Frame rate: 10~15 fps

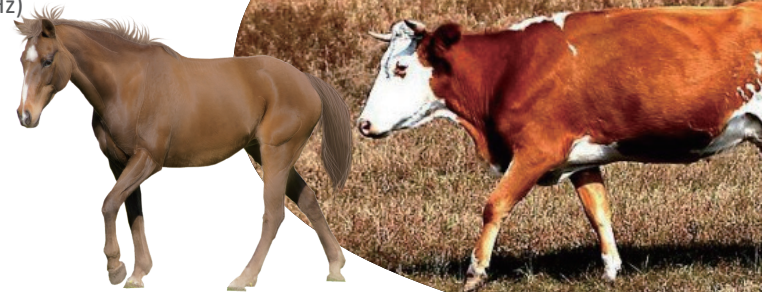
Probe cable length ~1.7m

USB cable length ~1.6m

USB connector: type-C or type-A

OS support: Android or Windows

15 months warranty



Ovine

SPECS

RL8-4E 6MHz 64mm linear rectal probe (4~8MHz)

Imaging mode: B/PWD

80 element probe

Weight ~220g

Power consumption < 1.6W

Freeze/Unfreeze button

Depth from 2 to 10cm

Frame rate: 13~15 fps

USB cable length ~1.6m

USB connector: type-C or type-A

OS support: Android or Windows

15 months warranty



EURL HEALTH AGRO IMPORT EXPORT

Mob.: +213 550 36 65 52

e-mail: healthagro.dz@gmail.com

Adress: Local N° 03 Tanadjelt, Ouaguenoun 15621, Tizi Ouzou

