



# XD115

Veterinary Hematology Analyzer

## 5-part:laser+impedance+ colourimetric haematology

Three discrete measurement channels combine to provide a true 5-part differential, with White Blood Cell, Red Blood Cell and Platelet parameter results from just a 15uL sample. In only 60 seconds get results you can trust, with Laser flow cytometry, impedance counts and colourimetric detection technologies to detect not only white blood cell volume, but complexity and granularity obtained by a triple angle laser scatter. While accurate and fast, the XD115 remains very simple to use with a large colour touch screen, intuitive navigation simplified data entry and easy reagent management.

Results in 60 seconds

Accurate 5-part laser and impedance

Profitable low cost per test

Small 15uL sample

# Combination of Technologies

# Small Sample Size of 15µL

Counting Channels	Technology	Parameters
① Diff Channel	Flow Cytometry	LYM, MON, NEU, EOS
② RBC/PLT Channel	Impedance	RBC/PLT
③ Baso/HGB Channel	Colourimetry	BAS, WBC, HGB



## Features:

### Consolidated results and reporting

- Combine results using the HeskaView Integrated Software® program or transmit to your PMS. Rapidly retrieve patient worklist with bidirectional communication.

### Multi-species availability

- Dog, Cat, Horse, Cow, Ferret, Goat, Llama, Monkey, Mouse, Giant Panda, Red Panda, Pig, Rabbit, Rat and Sheep

### Easy reagent management

- Manage reagents via bar-code scanner and on-board menu functions. Internal reagent storage saves space and reduces clutter

### Intuitive navigation

- Simplified data entry and patient test review with numeric results, histograms and scatter plots



## Parameters

### White Blood Cell

- Total White Blood Cell (WBC)
- Neutrophil Number (NEU#)
- Neutrophil Percent (NEU%)
- Lymphocyte Number (LYM#)
- Lymphocyte Percent (LYM%)
- Monocyte Number (MON#)
- Monocyte Percent (MON%)
- Eosinophil Number (EOS#)
- Eosinophil Percent (EOS%)
- Basophil Number (BAS#)
- Basophil Percent (BAS%)

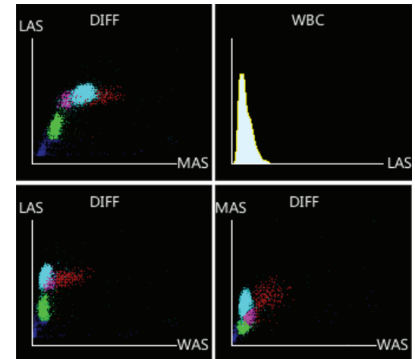
### Red Blood Cell

- Total Red Blood Cell (RBC)
- Haemoglobin (HGB)
- Haematocrit (HCT)
- Mean Cell Volume (MCV)
- Mean Cell Haemoglobin (MCH)
- Mean Cell Haemoglobin Conc. (MCHC)
- Red Blood Cell Distribution (RDW-CV)

### Platelet

- Total Platelet (PLT)
- Mean Platelet Volume (MPV)

## WBC Scatter Plots & Histograms



## Results and Reporting

### Easy to use

- Web-style links for simple navigation

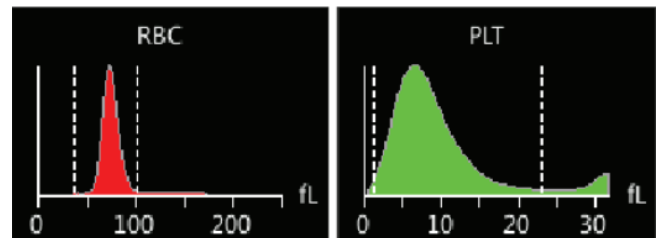
### Simple data management

- Rapidly retrieve trending data from patient record

### Efficient

- Assign, unassign or delete multiple items at once
- Species-specific reference ranges and colour-coded flags make it easy to quickly evaluate patient data

## RBC /PLT Histograms



EURL HEALTH AGRO IMPORT EXPORT

Mob.: +213 550 36 65 52

e-mail: healthagro.dz@gmail.com

Adress: Local N° 03 Tanadjelt, Ouaguenoun 15621, Tizi Ouzou

